

Atwood® Ranges & Cooktops

Including Wedgwood Vision® Brand



EFFECTIVE NOVEMBER 2007

 Atwood®

The Atwood Mobile Products Advantage



Igniting a Passion for Cooking!

Atwood Mobile Products has relentlessly pursued higher-quality, residential-like ranges and cooktops to provide greater convenience to those enjoying the RV lifestyle.



Atwood® and Wedgwood Vision® brand ranges and cooktops provide the control every great chef wants with linear valves and high-BTU burners that can adjust easily from a simmer to a full boil.

Electronic ignition eliminates the hassles of lighting burners manually while first-in-the-industry, sealed burners take some of the drudgery out of cooking by making cleanup easier.



Contemporary styling makes our ranges and cooktops visually appealing, while convenient and powerful features make it easy to see how they *Ignite a Passion for Cooking!*



Atwood® High-Output Ranges



Like A Residential Kitchen On Wheels!

Atwood Mobile Products is pleased to offer a line of modern, residential style ranges and ovens that have been specifically designed for those enjoying the RV lifestyle. Through extensive research and development, Atwood has combined a number of features to help RVers *Ignite Their Passion for Cooking!*

Features of Atwood's innovative design include:

Electronic Ignition — A simple turn of the knob and your top burner is on with our first in the RV industry electronic ignition.

Sealed Burners — Atwood is the first in the industry to introduce sealed burners for RV ranges, designed to make clean up easier and provide the residential look.

Linear Burner Valves — Easily adjust the flame requirement to your cooking needs from a simmer to a full boil.

Practical Aesthetics — The new clean, style is pleasing to look at and is also practical with a slanted control panel that makes it easier to view the controls and settings, and a new oven door handle with round edges for a more comfortable grip which can also be used as a towel rack.

Residential-Type Grates — Special heavy-duty grates are not only attractive, but also designed for easy cleaning, and better surface coverage.

9,000-BTU high output main burner and enhanced 6,500-BTU rear burners — Provides more power to reduce cooking time.

Centralized high output burner & improved flame distribution — The residential-like port configuration provides better flame distribution that helps cook food more evenly.

Modulating Thermostat — Atwood ranges feature a new modulating Thermostat which reduces temperature fluctuations and provides more consistency for better roasting and baking. Unlike many current oven thermostats that shut off the oven burner after a certain temperature is reached, Atwood's Modulating Thermostat brings the oven up to the desired temperature and keeps it there. The burner flame "modulates" down to a level that will maintain the desired temperature.

Finish Choices — Available in stainless steel, black or white.

Atwood® Range Selection Guide

17" OVENS		21" OVENS		Burner Output		Surface Color		Door Color		Special Features							
Model No.	Part No.	Model No.	Part No.	Front ~9,000 BTU	Rear ~6,500 BTU	Black	White	Black Glass	White Glass	Stainless Steel	Piezo Ignition	Electronic Ignition	Sealed Burners	Black Control panel w/ notch feature	White Control panel w/ notch feature	Gas Extension Special	UPS
R-A1733 BGP	57427	R-A2133 BGP	57444	•	•	•	•	•	•	•	•	•					
R-A1733 W2P	57433	R-A2133 W2P	57458	•	•	•	•	•	•	•	•	•					
R-A1733 BGE	57425	R-A2133 BGE	57441	•	•	•	•	•	•	•	•	•					
R-A1733 W2E	57431	R-A2133 W2E	57455	•	•	•	•	•	•	•	•	•					
R-A1733 WGPW	57437	—	—	•	•	•	•	•	•	•	•	•					
R-A1733 BGP UPS	57428	R-A2133 BGP UPS	57446	•	•	•	•	•	•	•	•	•					•
R-A1733 BGE UPS	57426	—	—	•	•	•	•	•	•	•	•	•					•
—	—	R-A2133 W2E UPS	57457	•	•	•	•	•	•	•	•	•	•	•	•		•
R-A1733 W2E UPS	57432	—	—	•	•	•	•	•	•	•	•	•					•
R-A1733 W2P UPS	57434	R-A2133 W2P UPS	57459	•	•	•	•	•	•	•	•	•					•
R-A1733 WSP	57438	—	—	•	•	•	•	•	•	•	•	•					•
R-A1733 WSPX	57439	—	—	•	•	•	•	•	•	•	•	•					•
—	—	R-A2133 BGE UPS		•	•	•	•	•	•	•	•	•					•
—	—	R-A2133 BSP	57449	•	•	•	•	•	•	•	•	•					
—	—	R-A2133 BGEN	57443	•	•	•	•	•	•	•	•	•	•				
—	—	R-A2133 BGPN	57445	•	•	•	•	•	•	•	•	•	•				
—	—	R-A2133 W2EN	57456	•	•	•	•	•	•	•	•	•					

Dimensions

For Cut Out Dimensions See Figure A	A		B		C†		D		F		G	
	in.	mm	in.	mm	in.	mm	in.	mm	in.	mm	in.	mm
All 17" Ovens	17 3/4	451	20 1/4	514	13/4	45	16	406	13/4	45	11/2	38
All 21" Ovens	17 3/4	451	20 1/4	514	13/4	45	20	508	13/4	45	11/2	38
Atwood allowable tolerances	- 0" + 1/4"	—	- 1/8" + 1/8"	—	—	—	- 0" + 1/4"	—	—	—	—	—

† Minimum distance to combustible wall any side.

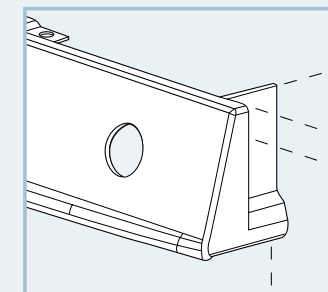
Shipping Specifications

High Output Ranges	Shipping Wt.*		Carton Length		Carton Width		Carton Depth	
	lbs.	kg	in.	mm	in.	mm	in.	mm
All 17" Ovens	50*	23.6	24	610	22 3/4	578	19 1/2	496
All 21" Ovens	58*	38.6	24	610	22 3/4	578	23 1/4	591

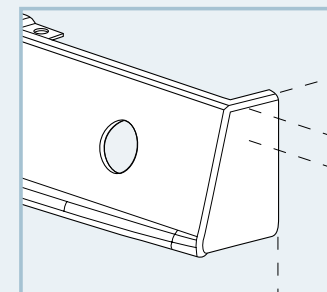
* For 17' range with glass door add 5#.
* For 21' range with glass door add 6#.

Installation Time Savers

- **No special notch cut-out** for the cabinet.
- Top that lifts out for easy gas line installation.
- No trim around the oven, eliminates misalignment or gaps to the cabinet face.
- Door handle design provides easy access to the door glass allowing removal of the glass without having to disassemble the door.



The new Wedgewood Vision® ranges feature the control panel with our indentation on each side, eliminating the need to notch the cabinet top.



If you elect to notch the cabinet top or in some recessed installation applications, it may be necessary to order a model number with the letter "N" designation.

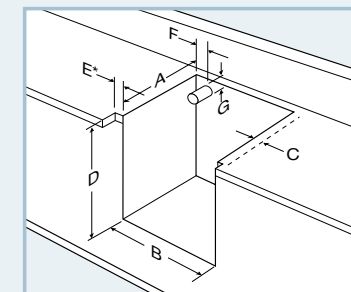


Figure A

Wedgewood Vision® Ranges



Specifically Designed to Bring Home-Cooking On-The-Road!

Innovative Design

Wedgewood Vision® ranges and cooktops are designed to incorporate specific recreation vehicle requirements and to bring the comfort and styling of residential ranges on the road.

Features of Wedgewood Vision's innovative design include:

Wide Door — Full width oven door has residential look with comfort-grip handle.

Single Grate — Our new, single piece grate allows the cook to slide pots and pans from burner to burner without lifting and helps prevent large pans from tipping.

Linear Valves — Adjust burners from a gentle simmer to a raging boil with our new 1,100-to-9,000 BTU linear valves.

Individual Igniters — Eliminates rattling flash tubes and improve coach livability during travel. Fold-down cooktop covers for additional counter-top work space.

Centralized high output burner & improved flame distribution — Our centralized high output burner location allows for the convenient use of a variety of pots and pans. Better flame distribution, through a residential-like port configuration, helps cook your food more evenly.

Spacious 17" or 21" ovens — Atwood® and Wedgewood Vision® ranges are available in 21" or space-saving 17" ovens—both deliver the same high-quality 450° F. cooking performance.

Built-in broiler/toaster section — Our built-in broiler/toaster sections provide additional convenience.

Ignitor or match light — Wedgewood Vision® ranges come equipped with piezo igniters or can be ordered as match-light.

Mercury-Free—Many RV ranges are equipped with oven thermostats containing encapsulated mercury in the oven safety valve. An environmentally sound procedure for the disposal of products containing even trace amounts of mercury is under consideration in a number of states. Atwood has taken the initiative to eliminate this disposal problem by installing thermostats which function to our high performance and safety standards but do not contain even trace amounts of this environmentally harmful chemical.

Finish Choices — Atwood® and Wedgewood Vision® ranges are available in stainless steel, black or white.

Wedgewood Vision® Selection Guide

17" OVENS		21" OVENS		Top Color		Door Color									
Model No.	Part No.	Model No.	Part No.	Black	White	Black	Black Glass	White	White Glass	Stainless Steel	Piezo Ignition	Black Control Panel w/ stainless steel overlay	Black Control Panel for notch feature	UPS Packaging	Gas Extension special
RV-1733 BB	57313	RV-2133 BB	57370	•		•									
RV-1733 BBUPS	57321	RV-2133 BBUPS	57380	•		•									•
RV-1733 BBP	57317	RV-2133 BBP	57373	•		•				•					
RV-1733 BBPN	57318	RV-2133 BBPN	57375	•		•				•		•			
RV-1733 BBPUPS	57320	RV-2133 BBPUPS	57378	•		•				•				•	
RV-1733 BG	57322	RV-2133 BG	57387	•			•								
RV-1733 BGN	57325	RV-2133 BGN	57389	•			•						•		
RV-1733 BGP	57327	RV-2133 BGP	57391	•			•			•					
RV-1733 BGPUPS	57330	RV-2133 BGPUPS	57393	•			•			•				•	
RV-1733 BGPX	57331	RV-2133 BGPX	57396	•			•			•					•
RV-1733 BGX	57333	—	—	•			•								•
RV-1733 W1	57345	RV-2133 W1	57402		•			•							
RV-1733 W1P	57347	RV-2133 W1P	57403		•			•		•					
RV-1733 W1PUPS	57349	RV-2133 W1PUPS	57408		•			•		•				•	
RV-1733 W1PW	57350	RV-2133 W1PW	57409		•			•		•	•				
RV-1733 W1UPS	57353	RV-2133 W1UPS	57410		•			•		•				•	
RV-1733 W2P	57354	RV-2133 W2P	57411		•			•		•					
—	—	RV-2133 W2PUPS	57415		•			•		•				•	
RV-1733 WB	57358	RV-2133 WB	57416		•	•				•					
RV-1733 WBP	57361	RV-2133 WBP	57417		•	•				•					
RV-1733 WBPX	57362	—	—		•	•				•					•
RV-1733 WG	57363	RV-2133 WG	57420		•		•			•					
RV-1733 WGP	57365	RV-2133 WGP	57421		•		•			•					
RV-1733 WGN	57366	RV-2133 WGN	57422		•		•			•			•		
RV-1733 BSP	57335	RV-2133 BSP NEW!	57382	•					•	•					
RV-1733 BSPS	57336	RV-1733 BSPS NEW!	57383	•					•	•	•				
RV-1733 BSPS X	57338	—	—	•					•	•	•				•

Dimensions

For Cut Out Dimensions See Figure A	A		B		C†		D		E – Notch *		F		G	
	in.	mm	in.	mm	in.	mm	in.	mm	in.	mm	in.	mm	in.	mm
All 17" Ovens	17 3/4	451	20 1/4	514	1 1/8	45	16	406	7/16	11	13/4	45	11/2	38
All 21" Ovens	17 3/4	451	20 1/4	514	1 1/8	45	20	508	7/16	11	13/4	45	11/2	38

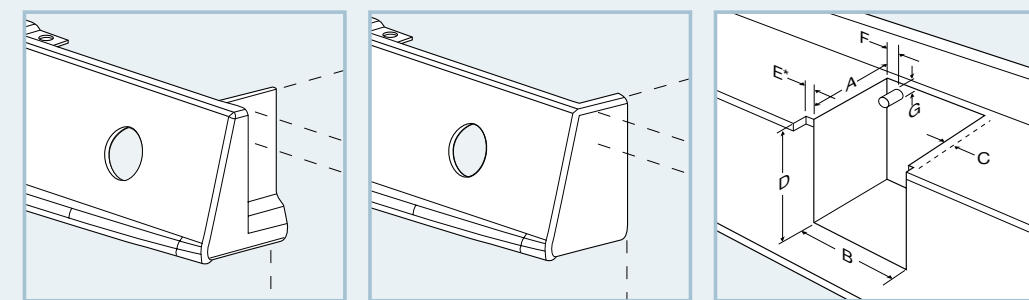
† Minimum distance to combustible wall any side.

* Optional and applies only to designated products with "N" in the model number.

Shipping Specifications

High Output Ranges	Shipping Wt.*		Carton Length		Carton Width		Carton Depth	
	lbs.	kg	in.	mm	in.	mm	in.	mm
All 17" Ovens	52	23.6	24	610	22 3/4	578	19 1/2	496
All 21" Ovens	63	38.6	24	610	22 3/4	578	23 1/4	591

* For ranges with glass doors add 1 lb. (.5kg).



The new Wedgewood Vision® ranges feature the control panel with our indentation on each side, eliminating the need to notch the cabinet top.

If you elect to notch the cabinet top or in some recessed installation applications, it may be necessary to order a model number with the letter "N" designation.

Figure A

Atwood® and Wedgewood Vision® Slide-Ins



All the Power of our High Output Ranges in a space-saving cooktop!

Atwood® and Wedgewood Vision® brand cooktops are perfect for customers with tight space and/or weight requirements or for those who prefer a microwave to an oven. In addition, they deliver all the benefits of the high output range.

Atwood® and Wedgewood Vision® Range/Ovens and Slide-In Cooktops are CSA approved and are available to Original Equipment Manufacturers of RVs with slide-out kitchens. This factory installed option meets all Canadian regulations.

Features

9,000-BTU main burner—high output front burner, the first in the RV industry, can boil water 75% faster than standard cooktop burners!

6,500-BTU enhanced output on both rear burners—makes preparation of side dishes easier and more convenient than ever.

Even Cooking—better flame distribution, through residential-like port configurations, allows for more even cooking and our centralized burner location helps cook food faster and more evenly.

Slide-In Cooktop Selection Guide

Model No.	Part No.	Burner Output		Surface Color		Ignition		Control Panel	
		Front — 9,000 BTU	Rear — 6,500 BTU	Black	White	Piezo Ignition	Electronic Ignition	Gas Extension special w/ notch feature	Black Control Panel w/ Stainless Steel Overlay
Atwood® Slide-In Cooktops									
CA-33 WE	57487	●	●	●	●	●			
CA-33 BE	57480	●	●	●	●	●			
CA-33 WP	57488	●	●	●	●	●			
CA-33 BP	57482	●	●	●	●	●			
CA-33 BPN*	57483	●	●	●	●	●	●		
CA-33 BEN*	57481	●	●	●	●	●	●	●	
Wedgewood Vision® Cooktops									
CV-33 W	57473			●	●				
CV-33 B	57460		●						
CV-33 WP	57476			●	●				
CV-33 WPN	57478			●	●		●		
CV-33 BP	57463		●		●				
CV-33 BPN	57464		●		●		●		
CV-33 BPX	57465		●		●		●		
CV-33 BPXN	57468		●		●		●	●	
CV-33 BPS	57466		●		●		●	●	●
CV-33 BPSX	57467		●		●		●	●	●



Atwood® Slide-In



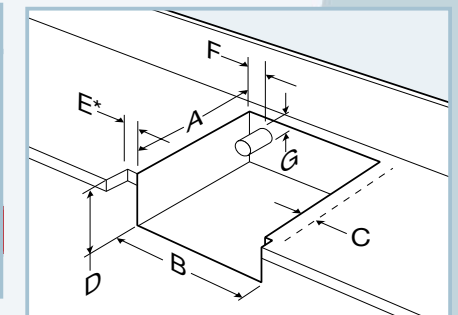
Wedgewood Vision® Slide-In

Note: All Slide-in units feature open burners with linear valves.

Atwood® Slide-In Cooktops															
Model Suffix	Model Type	A		B		C†		D		E*		F		G*	
		in.	mm	in.	mm	in.	mm	in.	mm	in.	mm	in.	mm	in.	mm
P	Piezo	17 3/4	451	20 1/4	515	2 1/8	45	3	76	7/16	11	1 3/4	45	3/4	19
E	Electronic	See Note		20 1/4	515	2 1/8	45	3	76	7/16	11	1 3/4	45	3/4	19
Wedgewood Vision® Cooktops															
All	All	17 3/4	451	20 1/4	515	1 1/8	45	3	76	7/16	11	1 3/4	45	1 1/2	38

Note: for electronic slide-in (suffix E):
Top opening A=17 3/4", 451mm
Below Top A=18 1/4", 464mm

† Minimum distance to combustible wall on any side.
‡ Minimum distance to combustible wall any side.
* Maximum countertop overhang.



*Optional and applies only to designated products with "W" in the model number.

Shipping Specifications

Model No.	Part No.	Shipping Wt.		Carton Length		Carton Width		Carton Depth	
		lbs.	kg	in.	mm	in.	mm	in.	mm
All	All	21	9.5	22 1/2	572	22 3/4	578	6	153

Wedgewood Vision® Drop-In Cooktops

New, Stylish Drop-Ins for Lightweight and Tight Space



Benefiting from decades of experience designing ranges and cooktops specifically for the recreation vehicle market, Atwood's new Drop-In Cooktops are proudly built with quality and engineering expertise.

2 and 3-Burner Models

Wedgewood Vision® cooktops are available in black, white or stainless steel. The two-burner features one 7200 BTU burner with a large, oval grate and one 5200 BTU burner with a standard circular grate. The three-burner features one 7200 BTU burner with a large, oval grate and two 5200 BTU burners with circular grates. A cover with windguards is also available.

High-Pressure Outdoor Cooktop

The Atwood High pressure cooktop is designed solely for outdoor use. It's two 10,000 BTU burners and 16 psi gas pressure create a hard blue flame that resists wind.

Drop-In & Cover Selection Guide

2-BURNER							
MODEL NO.	RETAIL SINGLE PACK PART NO.	OEM 10 PACK PART NO.	OEM 20 PACK	COVER MODEL NO.	COVER PART NO.	TOP/COVER COLOR	BURNER RATING
DV20-W	56492	57089	—	DVC2-WLR	56438	(W) white	(1) 7200 (1) 5200
DV20-B	56493	57090	—	DVC2-BLR	56458	(B) black	(1) 7200 (1) 5200
DV20-S	56494	57091	—	DVC2-SLR	56459	(S) stainless	(1) 7200 (1) 5200
3-BURNER							
DV30-W	56470	57092	—	DVC3-WLR	56435	(W)	(1) 7200 (2) 5200
DV30-B	56471	57093	—	DVC3-BLR	56460	(B)	(1) 7200 (2) 5200
DV30-S	56472	57094	—	DVC3-SLR	56461	(S)	(1) 7200 (2) 5200
HIGH PRESSURE							
D-20 W HP	52425	—	—	—	—	(W)	(2) 10,000
D-20 20HP	—	—	52420	—	—	*(W) (B) (S)	(2) 10,000

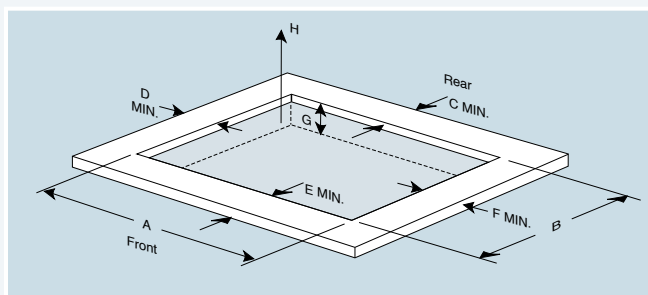
* 20 pack indicate one color

Dimensions

2 BURNER DIMENSIONS									
Description	A IN	B IN	C IN	D IN	E IN	F IN	G IN	H IN	
Burner Box	16.13	11.38	—	—	—	—	—	—	—
Counter Top Cutout	16.25	11.5	3.75	2.63	1.5	3.38	2.81	20.25	
Top	18.00	13.00	—	—	—	—	—	—	
Cover	18.50	13.42	—	—	—	—	—	—	
BURNER DIMENSIONS									
Burner Box	18.88	14.88	—	—	—	—	—	—	—
Counter Top Cutout	19.00	15.00	4.5	3.06	3.0	2.0	2.81	20.25	
Top	20.50	16.75	—	—	—	—	—	—	
Cover	21.00	17.17	—	—	—	—	—	—	
HIGH PRESSURE									
Hi Pressure Counter Top Cutout	16.38	11.38	4.75	2.25	.75	2.25	3.10	30.75	

Clearance to Combustibles from Edge of Cook Top

Model Type	Sides	Rear	Top	Front
New Atwood 2 Burner	1.75"L, 2.5"R	3.06"	20.25"	.75"
New Atwood 3 Burner	2.25"L, 1.25"R	3.72"	20.25"	2.0"
High Pressure	2.25"L, 2.25"R	4.75"	30.75"	.75"



Atwood® and Wedgewood Vision® Accessories

Cooktop Cover Selection Guide

Atwood Cooktop Cover			
Model No.	Part No.	Black	White
BFC 1 W	56418		●
BFC 1 B	56417	●	
Wedgewood Vision® Cooktop Cover			
Model No.	Part No.	Black	White
BFC 1	56398		●
BFC 1 B	56399	●	



Bi-fold Covers/Backsplash

Bi-fold covers are optional to the ranges. These attractive covers expand your counter space and are designed for easy installation. They all feature a latching mechanism that assures the cover to remain in an upright position when open. The covers, when folded back, serve as a back splash, protecting walls from food and grease splatters. They are available in colors that match our range finishes.

Recessed Covers

Recessed covers are special ordered, contact your Atwood sales department for cabinet cut-out sizes available. They are also designed for special laminate application. Recessed covers are available in two styles: M—for Corian® application and S—for Formica® application.



The recessed cover is easily installed with 2 screws on each side. The cover features a "locking latch" that holds the cover in place when in an upright or open position.



Broiler Pan

This full-sized porcelain enamel two-piece broiler pan has a dependable, easy-to-clean surface for trouble-free broiling.

Part Number 51000

Quality Manufacturing

The facility for manufacturing our ranges is an ISO 9000 approved facility located in Greenbrier, Tennessee. The manufacturing processes for the Atwood® & Wedgewood Vision® ranges are subject to intense scrutiny. Each range and slide-in is subject to electronic leak tests while being assembled plus frequent quality audits throughout the production line. These checks are all completed before being packaged for delivery to our customers.

Assurance

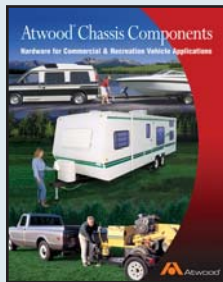
Atwood® & Wedgewood Vision® ovens, ranges and range covers come in a wide variety of models, with the most popular options to meet your R.V. needs. These reliable ovens are backed with assurances of CSA in the United States and Canada.

Service

Atwood® units are serviced throughout the United States and Canada.

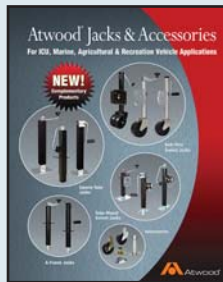
Atwood® Products

Atwood Mobile Products offers a wide range of products for many markets including, but not limited to, the Recreation Vehicle, Agricultural, Commercial, Industrial, and Marine industries. Product literature is available by calling 574-264-2131 or asking your regional salesperson.



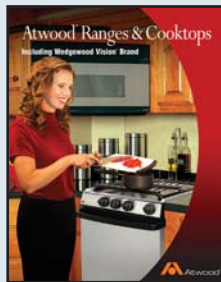
Atwood® Chassis Components

- Agricultural
- Commercial
- Industrial
- Marine
- Recreation Vehicles



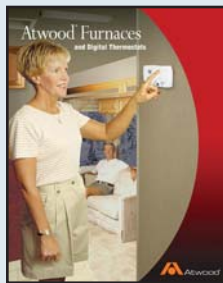
Atwood® Jacks & Accessories

- Agricultural
- Commercial
- Industrial
- Marine
- Recreation Vehicles



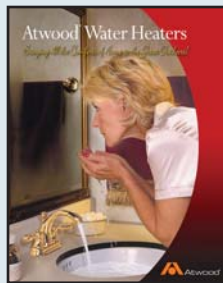
Atwood® Ranges & Cooktops

- Recreation Vehicles



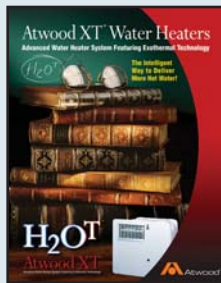
Atwood® Furnaces

- Recreation Vehicles
- Marine



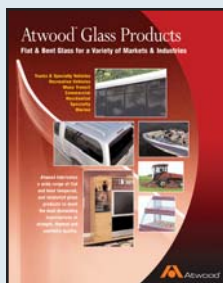
Atwood® Water Heaters

- Recreation Vehicles
- Marine



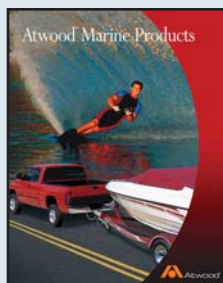
Atwood XT® Water Heaters

- Recreation Vehicles



Atwood® Glass Products

- Trucks/Specialty Vehicles
- Commercial/Residential
- Recreation Vehicles
- Specialty/Marine
- Mass Transit



Atwood® Marine Products

- Marine



Atwood® CO & LP Gas Alarms

- Recreation Vehicle

Atwood® Plants

Atwood Center

Sales/Marketing, Engineering, Warranty/Service

1120 North Main Street • Elkhart, IN 46514
Ph: 574-264-2131 • FAX: 574-262-2550

Greenbrier Operations

Ranges, Cooktops, Water Heaters

6320 Kelly Willis Road • Greenbrier, TN 37073
Ph: 615-643-4556 • FAX: 615-643-4616

West Union Operations - Hardware, RV Windows

800 Highway 150 S • West Union, IA 52175
Ph: 563-422-5641 • FAX: 563-422-5875

Elkhart Operations - Seating Systems & Hardware

57912 Charlotte Avenue • Elkhart, IN 46517
Ph: 574-522-7891 • FAX: 574-522-4188

Creation Group Plant 4 - Windows

23950 County Road 6 • Elkhart, IN 46514
Ph: 574-206-8566 • FAX: 574-206-8356

Creation Group Plant 5 - Doors

54347 Highland Blvd. • Elkhart, IN 46514
Ph: 574-262-9998 • FAX: 574-262-1180

Antwerp Operations - Glass

5406 U.S. 24 East • Antwerp, OH 45813
Ph: 419-258-5531 • FAX: 419-258-9411

Salt Lake Operations

Furnaces, Gas Alarms, Electronics

1874 Pioneer Road • Salt Lake City, UT 84104
Ph: 801-972-4621 • FAX: 801-973-9836

Kemberly

Aluminum Extrusions

201 East Simonton • Elkhart, IN 46514
Ph: 574-264-4144 • FAX: 574-262-2194

Note: In most cases, dimensions are rounded to 1/8". Drawings and dimensions subject to change without notice. For pricing, contact your Distributor or Atwood Sales Representative. All specifications and illustrations are based on the latest information at the time of publication. Atwood assumes no responsibility for any error in type or print reproduction of specifications in this literature. Due to our policy of continuous improvement, Atwood reserves the right to make changes in price, color, materials, equipment and specifications and to discontinue models at any time without notice.



1120 North Main Street • Elkhart, IN 46514
PHONE: 574-264-2131 FAX: 574-262-2550
INTERNET: <http://www.atwoodmobile.com>

